



EDUCATION ADVANCED®

- Product Suite -



TestHound®

Test Enablement Platform



Curriculum Mapping & Management Solution



Pathways
Graduation Tracking



Evaluation
Educator Growth



Customer Success Managers



Dr. Heidi King

Customer Success Manager

heidi.king@educationadvanced.com



Amy Stock

Customer Success Manager

amy.Stock@educationadvanced.com









**Processes needed to
support instruction
that results in
higher student
achievement**

1. Provide a consistent, guaranteed, viable curriculum ready for continuous improvement
2. Centralize all resources
3. Save teachers time in planning instruction
4. Monitor pacing of scope and sequence
5. Provide evidence of alignment between standards and actual instruction
6. Enable campus administrators to be instructional leaders



Tips on How to Make EMBARC More User Friendly

Administrative Functions

Departments
Users
Standards
Schools
Mass Maintenance
Students
Course/Sections
Testing Periods
Lesson Plan Schedules
Calendars
Projector Schedules
Content Partners
District Options
Activity Options
Assessment Options
Imports

District Options

NOTE: Other users will not see the impact of changes made to your District Options until their next login. To manually refresh these options, please have users log out and log back in.

Save

Cancel

Show Security Configuration

Show Course Configuration

Hide Unit Configuration

Unit Overview Title

Unit Description

Unit Optional Field 1 Title

Interdisciplinary Connections

Unit Optional Field 2 Title

Integration of Technology

Unit Optional Field 3 Title

Old information exists in this field, click here to clear it.

Unit Optional Field 4 Title

Old information exists in this field, click here to clear it.

☐ Lock?

Display Order

1 ☒ Public? ☐ Lock?

Display Order

2 ☒ Public? ☐ Lock?

Display Order

0 ☒ Public? ☐ Lock?

Display Order

0 ☒ Public? ☐ Lock?

<https://educationadvanced.atlassian.net/wiki/spaces/EKB/pages/22968926233/District+Configuration+Options+Side-by-Side>





Tips on How to Make EMBARC More User Friendly

District Access, Embarc Support



Administrative

Heidi King, Education Advanced Demo District (TX)

[Public Site](#) | [Notifications](#) | [Preferences](#) | [Support](#) | [Logout](#)

- Curriculum ☒
- Classroom ☒
- Assessment ☒
- Administrative Functions ☒
- Help & Training ☒
- Curriculum Help ☐

Help & Training > Curriculum

The purpose of this page is to provide documentation regarding Embarc. Content on this page varies from physical training and 'How To' documents to short demonstration videos. For simplicity sake, much of this documentation is supplied as Adobe Acrobat documents. If you would like the original Microsoft Word document so that you can modify it for your district, please feel free to [contact us](#).

Knowledge Base

[Link to Knowledge Base](#)

- Curriculum ☒
- Classroom ☒
- Assessment ☒
- Administrative Functions ☒
- Help & Training ☒
- Support ☒
- Preferences ☒
- Logout ☐

Support

At Embarc, we are committed to providing you with excellent support!

- [View our online help and training materials, or watch a video tutorial.](#)
- If you would like to call us, please use our toll-free number, 1-844-325-1414.
- If you would like to email us, please supply the information requested below so we can direct your email to the most appropriate individual(s).

[EMBARC Knowledge Base](#)

I need help from:

I need help from: [Embarc Support](#)

Curriculum - All Users

- [How to Create and Assign Learning Targets](#)
- [How to Add a Course](#)
- [How to Add a Unit](#)
- [How to Understand Topics](#)
- [How to Add a Topic](#)
- [How to Add an Activity](#)
- [How to Add and Edit Attachments](#)
- [How to Move Units, Topics, and Activities](#)
- [How to Align Learning Targets with Cross-Curricular Standard Sets](#)
- [How to Adjust the Pacing of Units and Topics](#)
- [How to Search and Copy Content](#)
- [How to Generate a Unit Details Report](#)

User Community Best Practices

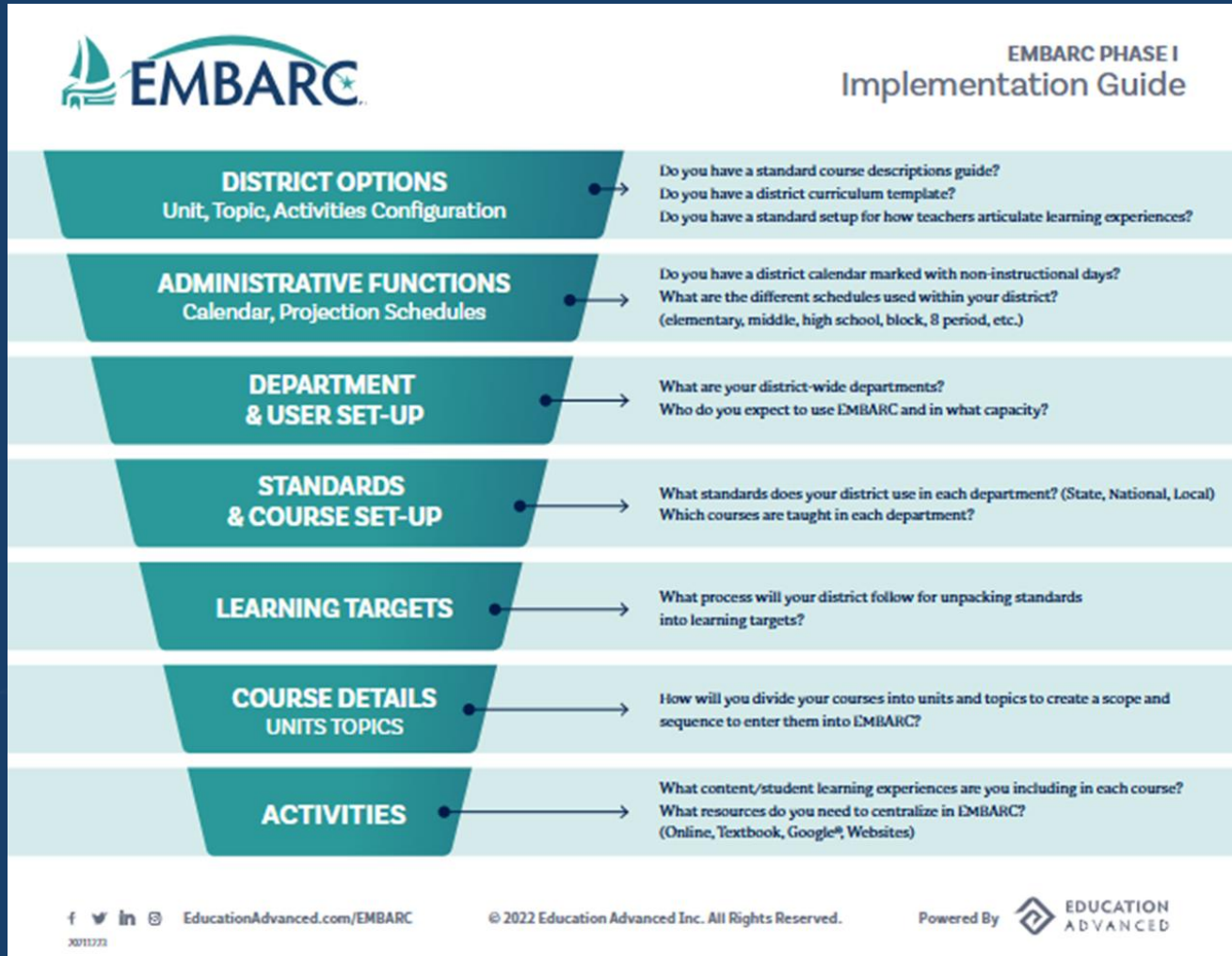
- [Greenbush and KS Districts Curriculum Management Documents](#)
- [Kewaskum WI Review Form](#)
- [Kimberly WI Understanding By Design Unit Look Fors](#)
- [Little Chute WI Curriculum Peer Review Process and Rubric](#)
- [Menasha WI Course Management and Payment Documents](#)
- [Sturgeon Bay WI Curriculum Peer Review Form](#)

Training Manual Documentation

- [Embarc Trainer Training Document](#)
- [HOW TO-View How Other Districts Align to the Same Standards](#)
- [INTRODUCTION TO-Introduction and Basic Training Guide For Educators](#)
- [HOW TO-Publish a Course and Use Your District's Public Site](#)
- [HOW TO-Use Learning Targets From The Common Core Institute](#)
- [DETAILS-Data Import Overview](#)
- [DATA IMPORT-Curriculum \(Courses, Units, Topics\)](#)



Tips on How to Make EMBARC More User Friendly



[Embarc Phase I Implementation Guide - EMBARC Knowledge Base - Confluence](#)



Tips on How to Make EMBARC More User Friendly

How to Setup/Refresh the ClassLink Login Feature

The ClassLink Administrator must add the Embarc tile to the district's ClassLink application.

Click [here](#) to access the ClassLink help documentation.

Then, users will be able to login using the ClassLink Login feature on the [Embarc login page](#).

Login with your Embarc Username

District State

Texas

District

Education Advanced Internal Training

Username

Password

[Forgot your password?](#)

Login

Cancel

[Still having trouble logging in?](#)

Login with an Existing Account

Google Login

ClassLink Login

NOTE: The email address that is registered with your existing account must match the email associated with your Embarc account for this login to be successful.

Also, Google Authentication is not supported when using Internet Explorer as your web browser.

<https://educationadvanced.atlassian.net/wiki/spaces/EKB/pages/23108288520/How+to+Setup+Refresh+the+ClassLink+Login+Feature>





Embarc with Google

Share Topic with Learning Management System

Close



Google Classroom

Data to Include: (There is a limit of 950 characters)

- ☐ Select/Unselect All
- ☒ Topic Description
- ☐ Learning Targets
- ☐ Standards - With Description
- ☒ Standards - Key only

Assignment Instructions

Topic Description: Discuss the ways we communicate (verbal, body language, facial expressions) Discuss proper ways to listen Discuss proper ways to speak Go over oral instructions as a sequence of action Learn about gathering information and sharing during a discussion

Standards

110.5.1.A
110.5.1.B
110.5.1.C
110.5.1.D
110.5.1.E

609 characters remaining



Administrative

Heidi King, Education Advanced Demo District (TX)

[Public Site](#) | [Notifications](#) | [Preferences](#) | [Support](#) | [Logout](#)

Curriculum

Courses

Scope And Sequence

Course Details

Big Picture

Print Course

Projection Details (Standards)

Projection Details (LT)

Standards

Activity Search

Pending Activities

Lesson Plan Search

Reports

Scope and Sequence

Department: English Language Arts Reading

Grade: 3rd

Back

3 ELAR (Pending)

[Course Standards](#) | [Learning Targets](#) | [Attachments](#)

☐ Edit Mode

3 ELAR			158
Unit: Literacy All Around Us - 10 Days (08/17/22 - 08/30/22)			
Communication - 2 Days			5
Working with Words - 3 Days			8
Reading and Writing Strategies - 5 Days			16
Unit: Author's Purpose and Message - 15 Days (09/01/22 - 09/22/22)			
test - 1 Day			0

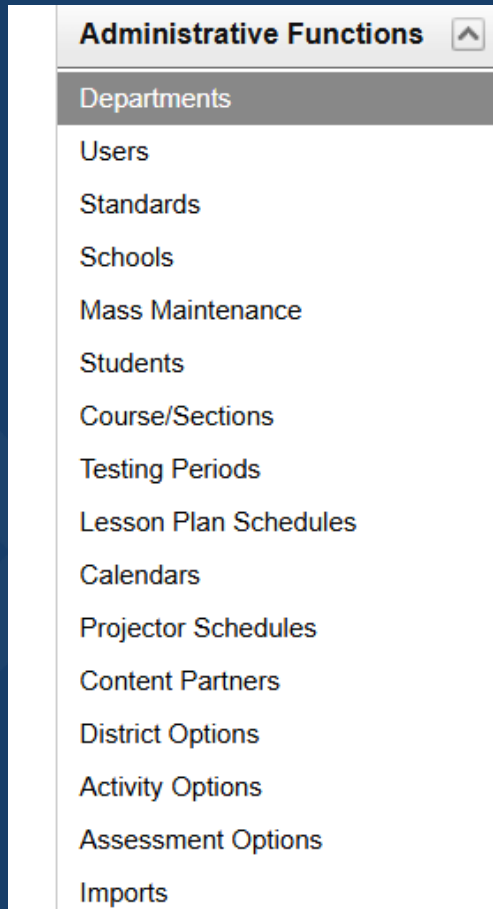


2022-07-11 09-24-14 - TechSmith Screencast





Administrative Functions



- Not all will have access
- Key to setting Embarc up to best meet your district's needs
- Yearly maintenance will be needed in some areas
- Mass Maintenance





Administrative Functions

Imports

Data Imports

School Import

The school data file represents a current listing of schools/buildings for a district.

User Import

The user data file represents current educators in the district, and may include teachers with assigned classes/students as well as curriculum and assessment support staff.

Student Import

The student data file represents current students in the district, and may include optional demographic information for reporting purposes.

Course/Section Import

The course/section data file represents current courses and sections being offered in the district, and indicates the primary teacher assigned to each section of the course.

Student/Class Roster Import

The student/class data file represents a current roster of students assigned to a section of a course. Course and section details should be provided as part of the Course/Section Import.

Course & Learning Target Import

The course and learning target file allows you to import new courses and learning targets, just new learning targets, or update course descriptions.

Curriculum Import

The file allows you to import an entire course of curriculum.

District Standard Import

The district standard file allows you to import new standards specific to your district.





Help with Checklists

Back to School Checklist



Welcome back! We are here to support your work this school year and thought we'd share a few helpful Embarc reminders! Don't hesitate to reach out if have any specific needs or would like to request training for your staff.

[Back to School Checklist -](#)
[Embarc Knowledge Base -](#)
[Confluence](#)

- **MOY/EOY/Semester Updates**

- Courses/Students
- Updates to Curriculum
- Notes for changes/ improvement

<https://educationadvanced.atlassian.net/wiki/spaces/EKB/pages/22968696917/Embarc+Monitoring+Instruction+Timeline>



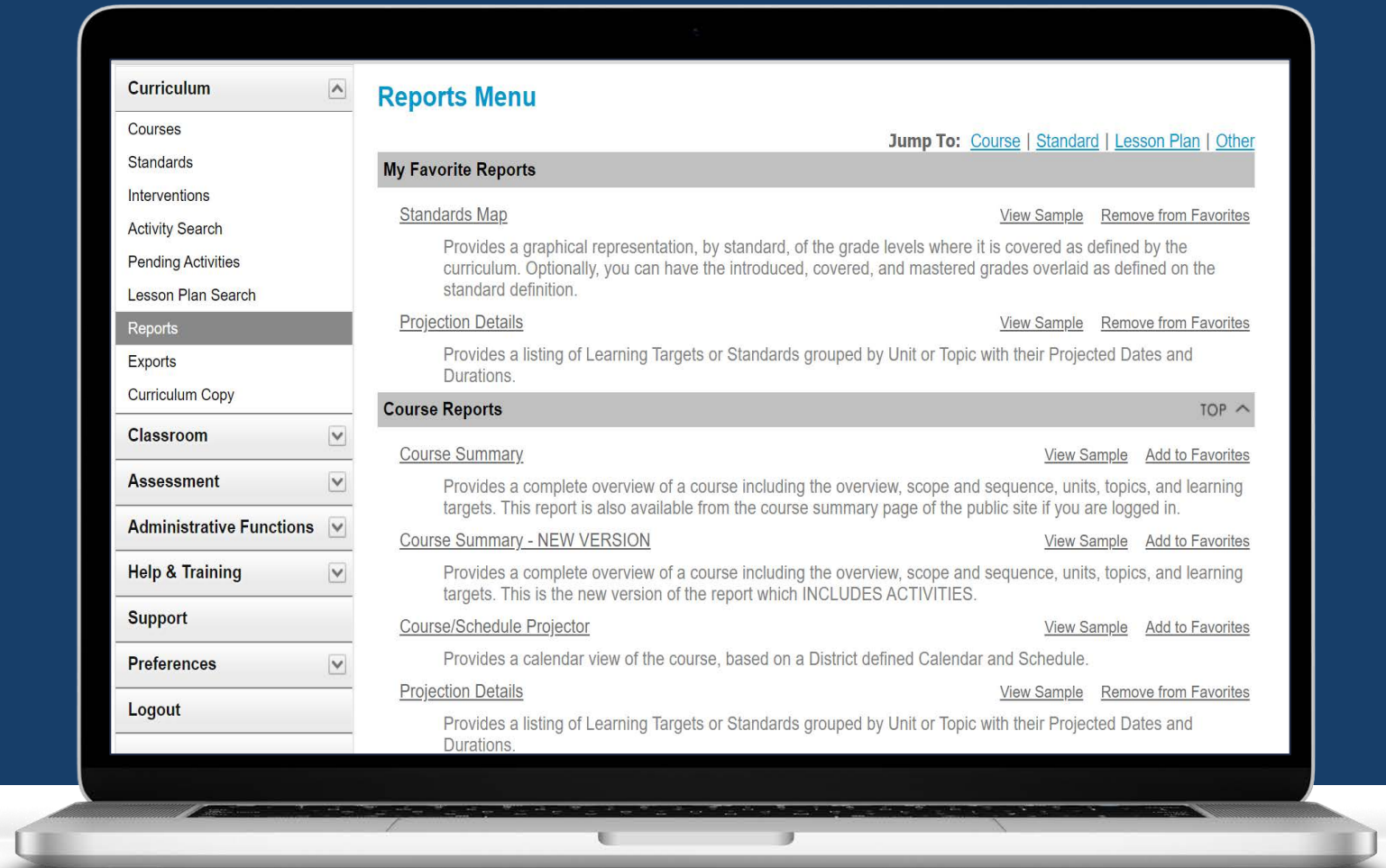


Analysis and Reporting

Menu

Over 40 reports analyzed by:

- Course
- Standard
- Learning Targets
- Lesson Plans
- Activities
- Student Assessments
- Administrative (users, etc.)





Analysis and Reporting of Instruction

Monitoring Instruction

Projection Details - Topic/Learning Target Report

Course: Principles of Health Science

Unit: Welcome

8/18/2021 - 8/18/2021 1 Day(s)

Topic: Course Welcome

1 Day(s)

The student will express ideas in a clear, concise, and effective manner.

Unit: History of Healthcare

8/20/2021 - 8/31/2021 8 Day(s)

Topic: History of Medicine

3 Day(s)

The student will research the historical significance of health care.

Topic: Historical Significance of Healthcare

5 Day(s)

The student will research the historical significance of health care.

Unit: Healthcare Systems and Insurance

9/2/2021 - 9/14/2021 8 Day(s)

Topic: Healthcare Systems

1 Day(s)

The student will analyze the impact of local, state, and national government on the health science industry.

The student will describe the impact of health services on the economy.

Topic: The Availability of Healthcare

1 Day(s)

The student will analyze the impact of local, state, and national government on the health science industry.

The student will describe the impact of health services on the economy.

Topic: Insurance

6 Day(s)

The student will apply data from tables, charts, and graphs to provide solutions to health-related problems.

The student will interpret technical material related to the health science industry.

The student will analyze the impact of local, state, and national government on the health science industry.

The student will describe the impact of health services on the economy.

Unit: Career Explorations

9/16/2021 - 9/27/2021 8 Day(s)

Topic: Personality Assessment

2 Day(s)

The student will organize, compile, and write ideas into reports and summaries.

Key: ■ - Coverage based on Standard Definition ■ Coverage based on Curriculum Alignment Course Count / LT Count

Department/Course: Mathematics
Area: TEKS - TEKS :: Mathematics :: 2014
Strand: Math-6-8 - Math Middle School

Standard	PK	K	1	2	3	4	5	6	7	8	9	10	11	12	
111.26.b.1.A								■							2 / 3
111.26.b.1.B								■							2 / 3
111.26.b.1.C								■							2 / 2
111.26.b.1.D								■							1 / 1
111.26.b.1.E								■							2 / 2
111.26.b.1.F								■							1 / 1
111.26.b.1.G								■							1 / 1
111.26.b.10.A								■							0 / 0
111.26.b.10.B								■							0 / 0



Analysis and Reporting

Standards Alignment

Standards Map Report														
Department/Course: Career and Technical Education - Health Science														
Area: PHS - TEKS Principles of Health Science 2015														
Strand: H_130_222 - Principles of Health Science														
Standard	PK	K	1	2	3	4	5	6	7	8	9	10	11	12
H.130.222.c.1.A											<div></div>	<div></div>	<div></div>	1 / 1
H.130.222.c.1.B											<div></div>	<div></div>	<div></div>	2 / 2
H.130.222.c.1.C											<div></div>	<div></div>	<div></div>	1 / 1
H.130.222.c.10.A											<div></div>	<div></div>	<div></div>	0 / 0
H.130.222.c.10.B											<div></div>	<div></div>	<div></div>	0 / 0
H.130.222.c.10.C											<div></div>	<div></div>	<div></div>	0 / 0
H.130.222.c.10.D											<div></div>	<div></div>	<div></div>	0 / 0
H.130.222.c.10.E											<div></div>	<div></div>	<div></div>	0 / 0





Publishing Your Curriculum

[How to Publish/Unpublish Courses on the District Public Site - EMBARC Knowledge Base - Confluence](#)

From the "Status" dropdown menu, select the desired course status, then click Save.

Course Details (editing), Embarc

Jump To: [Attachments](#) | [Suggestions](#)

General Course Information

Primary course fields have been disabled to prevent accidental changes.
Enable editing of these fields

*Department: CTE - Health Science - Healthcare Therapeutics

*Grade Level(s): 9th to 9th

*Course Name: Principles of Health Science

Course Code: 13020200

*Course Level: 1

*Credits: 1

*Duration: 1 Year

*Course Type: ☐ Required ☐ Elective ☒ CTE Course

*Status: Pending

Course Description:

Principles of Health Science provides an overview of the therapeutic, diagnostic, health informatics, support services, and biotechnology research and development systems of the healthcare industry. The course also introduces students to medical vocabulary appropriate to medical procedures, human anatomy and physiology, and pathophysiology.

Additional Course Information

Enduring Understandings:





Lesson Planner

How to Use the Lesson Planner

- [How to Use the Lesson Planner](#)
- [System Administrator](#)
 - [Create Lesson Plan Schedules](#)
 - [Creating a Time-Based Schedule](#)
 - [Creating a Duration-Based Schedule](#)
 - [Review Lesson Plan Configurations and Create Templates](#)
- [All Users](#)
 - [Creating a Class](#)
 - [Creating a Lesson Plan](#)
 - [Lesson Plan: Other Features](#)
 - [Recurrence](#)
 - [Manually Reset Dates and Times](#)
 - [Automatically Bump Dates](#)
 - [Replicate Schedule](#)
 - [Mass Delete](#)





Lesson Plan Detail

Teacher View

Science > Lesson Plan Details

Class Options: [Home](#) | [Assignments](#) | [Discussions](#) | [Announcements](#) | [Events](#) | [LPs](#) | [Curriculum](#)

General Information

Primary Course: 6th Grade Science

Date/Time: 8/6/2021 - Period 1 [Recurrence](#)

Status:

[Edit General Information](#) [Print LP](#) [View Help](#)

NOTE: This Lesson Plan is accessible to the general public.

[Add Additional Curriculum Content](#) Spell Check Cancel / Back Save

*LP Name:

Learning Targets [Create LT](#)

[How do I change the order of Activities?](#)

Activities [Create Activity](#)

Assignments [Create Assignment](#)

Assignment/Review	Due Date	Points	# Completed	Score	Edit	Delete
Animal Classification Presentation	08/14/2021	100	0/20	<input checked="" type="checkbox"/>	Edit	Delete



Lesson Plan Detail

Teacher View

The screenshot shows a web interface for adding attachments to a lesson plan. It features a 'Suggested Attachments' header, a form with radio buttons for 'File', 'Web Link', and 'Google Drive', a text input for the file name, and a 'Select' button. A note explains that multiple files will have preexisting names or be suffixed with a sequence number. Below this are fields for 'Display Name' and 'Description'. At the bottom, there are radio buttons for 'Visible To' with options 'My District', 'All Educators', and 'The Public'. A message states 'There are currently no suggested attachments for this course.' At the very bottom, there are links to 'Add this Course to my Favorites' and 'Set as Home Page'.

Suggested Attachments

*Type: ☒ File ☐ Web Link ☐ Google Drive Add Attachment

*File: Select

NOTE: If you attach multiple files at once, they will have their preexisting name in Embarc, or if you supply a file name, it will be suffixed with a sequence number.

Display Name:

Description:

*Visible To: ☐ My District ☐ All Educators ☐ The Public

There are currently no suggested attachments for this course.

[Add this Course to my Favorites](#) [Set as Home Page](#)



Lesson Planner Template

EMBARC

Administrative

Curriculum

Classroom

Classes

test

Mathletes - UIL

Add a Class...

Assignments

Discussions

Announcements

Events

Lesson Plans

Reports and Exports

Scoring Rubrics

Assessment

Administrative Functions

Help & Training

Support

Preferences

Logout

Public Site

Student Portal

Student Assessments

Kim Tunnell, Demo - Embarc Plus (WI)

[Public Site](#) | [Notifications](#) | [Preferences](#) | [Support](#) | [Logout](#)

Combined Class

Class Options: [Home](#) | [Assignments](#) | [Discussions](#) | [Announcements](#) | [Events](#) | [LPs](#) | [Curriculum](#)

Currently Viewing the Class Of : Demo Admin

General Information

Class Notes: This is our schedule for the year.

Edit

Cancel / Back

Lesson Plans

- Combined Class (current class)

TOP

Monday 8/2	Tuesday 8/3	Wednesday 8/4	Thursday 8/5	Friday 8/6	Saturday 8/7	Sunday 8/8
<div>Period 2 Social Studies</div> <div>Sixth Grade Social Studies</div> <div>Unit/Topic: 6 Elements of Geography/Physical Systems</div> <div>Fill in Notes</div> <div>Description: Students will view powerpoint and use fill in notes as material is being</div>	<div>Period 2 Social Studies</div> <div>Sixth Grade Social Studies</div> <div>Unit/Topic: 6 Elements of Geography/Human Systems</div> <div>Learning Targets: -Analyze how location, place, movement, human-environment</div>	<div>Period 2 Social Studies</div> <div>Sixth Grade Social Studies</div> <div>Unit/Topic: African Kingdoms/The Rise of African Civilizations</div> <div>Learning Targets: -Analyze the causes and effects of the roles of class, ethnicity, race and gender on the African civilization</div>	<div>Period 4 Science</div> <div>Sixth Grade Science</div> <div>Unit/Topic: Cell/What are Cells</div> <div>Learning Targets: -Provide evidence that organisms (unicellular and</div>	<div>Period 3 Social Studies</div> <div>6th Grade Social Studies</div> <div>Unit/Topic: African Kingdoms/Africa's Government and Religion</div> <div>Learning Targets: -Analyze the causes and effects of the</div>		
<div>Period 4 Science</div> <div>Sixth Grade Science</div> <div>Unit/Topic: Cell/What are Cells</div> <div>Learning Targets: -Develop an argument supported by evidence for how multicellular organisms are organized by varying levels of</div>	<div>Period 4 Science</div> <div>Sixth Grade Science</div> <div>Unit/Topic: Cell/What are Cells</div> <div>Learning Targets: -Provide evidence that organisms (unicellular and multicellular) are made of cells and that a single cell</div>	<div>Period 4 Science</div> <div>Sixth Grade Science</div> <div>Unit/Topic: Cell/What are Cells</div> <div>Learning Targets: -Provide evidence that organisms (unicellular and multicellular) are made of cells and that a single cell must carry out all of the</div>		<div>Period 6 Social Studies</div> <div>6th Grade Social Studies</div> <div>Unit/Topic: African Kingdoms/Africa's Government and Religion</div> <div>Learning Targets: -Analyze the causes and effects of the</div>		

+ Aligned to Power Standard



Classroom System (LMS)

Teacher View

EMBARC

Administrative

Kim Tunnell, Demo - Embarc Plus (WI)

[Public Site](#) | [Notifications](#) | [Preferences](#) | [Support](#) | [Logout](#)

Curriculum

Classroom

Classes

test

Mathletes - UIL

Add a Class...

Assignments

Discussions

Announcements

Events

Lesson Plans

Reports and Exports

Scoring Rubrics

Assessment

Administrative Functions

Help & Training

Support

Preferences

Logout

Public Site

Student Portal

Student Assessments

Social Studies

Class Options: [Home](#) | [Assignments](#) | [Discussions](#) | [Announcements](#) | [Events](#) | [LPs](#) | [Curriculum](#)

Currently Viewing the Class Of : Demo Admin

General Information

Class Notes: Classroom Procedures

Homework

Classroom Expectations

Consequences

Assignments

Lesson Plans

Class Notes: Classroom Procedures

Students start the class with a daily warm up of Social Studies vocabulary words, geography skills, or a quick write. These entries are copied into their spiral or journal. Quizzes are given periodically covering this material. On Mondays, we will discuss the assignments for the week. Please check the assignment calendar when absent.

Homework

Students will occasionally have homework. Unfinished classwork will be completed either before or after school in tutorials, or at home using the online textbook. Work that is turned in late will have a 25-point deduction from the earned grade.

Classroom Expectations

* Be Prompt - be seated and ready to work when the tardy bell rings

* Be Courteous - speak at an appropriate time in an appropriate way

* Be Prepared - have all supplies, completed assignments, and a library book

* Be Respectful - avoid conduct that interferes with teaching and learning

* Be Attentive - follow directions the first time they are given

Consequences

Should a student choose not to follow our class rules, the following steps will be taken:

1. Warning

2. Phone call to parent

3. Fifteen minute detention and phone call to parent

4. Thirty minute detention and phone call to the parent

5. A referral to the office and phone call to parent

Assignments

Assignment/Review

Due Date

Points

Completed

Score

Edit

Delete

Weekly Knowledge Quest 4

01/21/2022 3:00 PM

5

1/20

Weekly Knowledge Quest 5

01/28/2022 3:00 PM

5

0/19

Conflict Projection Project

02/01/2022 3:00 PM

10

2/20

Lesson Plans

- Social Studies (current class)

Monday 1/17

Tuesday 1/18

Wednesday 1/19

Thursday 1/20

Friday 1/21

Time

Description

Print

Period 1

Principles of Health Science

Period 2

6th Grade Social Studies Copy

Period 3

6th Grade Science

Period 4

Sixth Grade Science



Classroom System (LMS)

Teacher View

Discussions

TOP ^

Discussion	# Replies	Start Date	End Date	Edit	Delete
Discuss ideas for our new school mascot	2	07/28/2021 1:00 AM	08/31/2021		

Announcements

TOP ^

Announcement	Start Date	End Date	Delete
Remember permission slips for the museum field trip	07/31/2021 1:00 AM	08/13/2021 12:59 AM	

Events

TOP ^

Event	Date	Location	Delete
Field Trip to the Milwaukee Museum	08/13/2021 9:00 AM	Milwaukee	

Students

TOP ^

Would you like to give these students an assessment?

Give an Assessment

Student	Common ID	School	Grad Year	Emulate	Parent	Remove
Adams, Sophia	200167	Dawson High School	2022			
Allen, Olivia	200161	Dawson High School	2022			
Anderson, Nicholas	200159	Dawson High School	2020			
Brown, Logan	200149	Ryan Middle School	2020			
Campbell, Samantha	200165	Dawson High School	2022			
Clark, William	200171	Dawson High School	2022			
Collins, Brianna	200132	Yount Elementary School	2026			
Davis, Andrew	200126	Yount Elementary School	2026			
Green, Elizabeth	200136	Yount Elementary School	2026			
Hall, Dylan	200135	Yount Elementary School	2026			
Hernandez, Ava	200130	Yount Elementary School	2026			
Hill, Hannah	200142	Ryan Middle School	2020			
Hill, Lauren	200148	Ryan Middle School	2020			
Johnson, Jacob	200145	Ryan Middle School	2020			
Jones, Alexander	200124	Yount Elementary School	2026			
Lewis, Anthony	200128	Yount Elementary School	2026			
Ramirez, Hailey	200141	Yount Elementary School	2026			
Student, Demo	ssg	Dawson High School	2021			
Thompson, Noah	200160	Dawson High School	2016			
Young, Emily	200138	Yount Elementary School	2026			


Student/LT Report





Classroom System (LMS)

Student View



Student Portal

Demo Student, Demo - Embarc Plus (WI)

[Notifications](#) | [Preferences](#) | [Logout](#)

Home

Classes

Science

Social Studies

Cross Country Team

Mathletes - UIL

Join a Class...

Assignments

Lesson Plans

Discussions

Calendar

Assessments

Curriculum

Help & Support

Preferences

Invite Your Parent

Logout

Welcome, Demo Student!

Late Assignments

Class	Assignment	Points	Status	Assigned	Due Date
Social Studies	Weekly Knowledge Quest 3 What was the last US Territory that was considered for statehood? For bonus credit explain the difference between a US...		✓	Friday, Jan 7th	Sunday, Jan 16th at 3:00 pm
Science	test aaaa		✓	Wednesday, Jun 9th	Thursday, Jun 10th

Upcoming Assignments

Class	Assignment	Points	Status	Assigned	Due Date
Social Studies	Weekly Knowledge Quest 4 What are the 3 branches of power in the US government and which should be politically independent?		✓	Friday, Jan 14th	Friday, Jan 21st at 3:00 pm
Science	Animal Classification Presentation You will choose an animal to research. You must include all the information listed on the assignment sheet. Once you have...		✓	Tuesday, Jan 11th	Friday, Jan 28th at 11:00 pm

Recently Reviewed Assignments

Class	Assignment	Points	Status	Assigned	Due Date
Social Studies	Conflict Projection Project Use the attached maps as the basis for a short paper (1 page, 12 pt font) predicting the most likely area for potential...	8.1/10	📄	Thursday, Dec 30th	Tuesday, Feb 1st at 3:00 pm

Today's Lesson Plans





Assessments/Course Sections/Testing Periods

- Assessments
- Testing Sessions
- Testing Periods
- Responses
- Reports





Assessment System

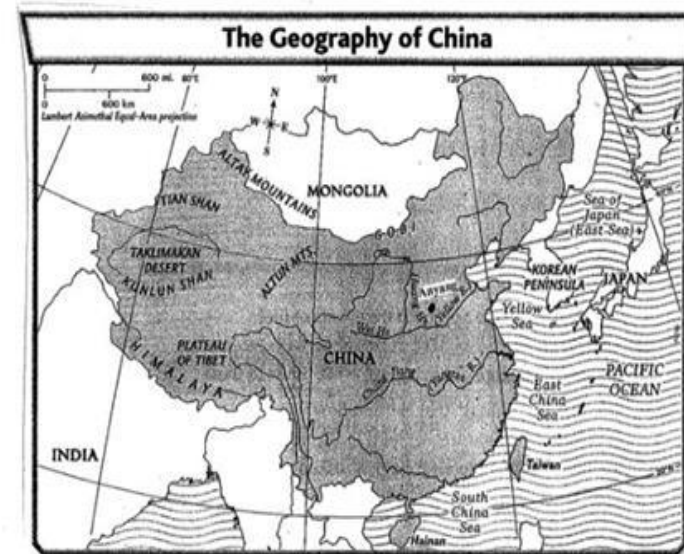
Student View

Question Details - 27 of 36

Section: Reading a Map: Applying Skills

Overview:

Use the map to answer the following questions.



[Click to view larger image...](#)

[Assessment Home](#)

[Previous Question](#)

[Skip this Question](#)

[Next Question](#)



Family Engagement



Expanding Minds and Futures

Courses

Courses by Grade Level

Courses by Department

Course Search

Standards

Class Information

Home

 Educator Login

Courses by Grade Level

Currently Showing Courses for: **All Grades**

Please select the grade that you would like to see courses pertaining to:

[PK](#) [K](#) [1](#) [2](#) [3](#) [4](#) [5](#) [6](#) [7](#) [8](#) [9](#) [10](#) [11](#) [12](#)

Art

[Primary Art Grades K-4](#)
[Grade 5 - General Art](#)
[Grade 6 - General Art](#)
[Grade 7 - General Art](#)
[Grade 8 - Art Elective](#)
[Art 1](#)
[Art 2](#)
[Multi Media Productions](#)
[2D Art](#)
[3D Art](#)
[Advanced Art Studies \(Being Revised\)](#)

Foreign Language

[MS Spanish \(Being Revised\)](#)
[Spanish 1 - NEW \(Being Revised\)](#)
[Spanish 2 \(Being Revised\)](#)
[Spanish 3 \(Being Revised\)](#)
[Spanish 4 \(Being Revised\)](#)
[Spanish 5 \(Being Revised\)](#)

Health

[Wellness 5 \(Being Revised\)](#)
[Health 8 \(Being Revised\)](#)
[Health 10-11 \(Being Revised\)](#)

Physical Education

[LCES K-2 Physical Education](#)
[LCES 3-4 Physical Education](#)
[LCIS 5-6 Physical Education](#)
[LCMS 7-8 Physical Education](#)
[Spring/Fall Sports](#)
[Winter Sports](#)
[Beginning Weights/Personal Fitness](#)
[Fit For Life](#)
[P.E. 3](#)
[P.E. 4](#)
[Racquet Sports](#)
[Team Sports](#)





Support

- **Help Center/Knowledge Base**

[EMBARC Knowledge Base - EMBARC Knowledge Base - Confluence](#)

- **Support Ticket**

[Embarc Issue - Education Advanced Product Support - Jira Service Management](#)

- **Online Support/Tutorials/How-To's**

[Help & Training > Curriculum, Embarc](#)

- **Call Us**

1-844-325-1414





Customer Success Managers



Dr. Heidi King

Customer Success Manager
heidi.king@educationadvanced.com



Amy Stock

Customer Success Manager
amy.stock@educationadvanced.com